

Changcheng Pao GWM POER 2023 Passenger 2.0T Automatic 4WD GW4C20B Pickup

Our Product Introduction

Basic Information

- Place of Origin: China
- Brand Name: GWM
- Certification: VDA, TUV ,ISO
- Model Number: Changcheng Pao GWM POER
- Minimum Order Quantity: 1
- Price: \$16000-21000/units
- Packaging Details: by sea, by trailer, rail via containers, LCL and RO-RO vessel
- Delivery Time: 7 working days
- Payment Terms: L/C, D/A, D/P, T/T, Western Union, MoneyGram
- Supply Ability: 1-10 units 15 - 20 working days, 10-30 units 20-30 working days, 30-50 units ≥30 working days

R·CHENG



Product Specification

- Product Name: Changcheng Pao Pickup
- Length * Width * Height: 5416x1947x1886mm
- Torque: 360N·m
- Color: Blue
- Engery: Gasoline, Diesel Oil
- Max Speed: 168km/h
- Highlight: **Changcheng Pao GWM POER, Passenger Changcheng Pao Pickup, Automatic 4WD GW4C20B Pickup**



More Images



for more products please visit us on electriccars-ev.com

Product Description

Changcheng Pao GWM POER 2023 Passenger 2.0T Gasoline Diesel Oil Automatic 4WD Premium GW4C20B High Quality Pickup

In terms of appearance, the grille design of the 23 Great Wall Motor Cannons (**Changcheng Pao GWM Cannon**) is closer to that of the Big Brother shanghai Cannon, and there are also brand new 18 inch wheels with a wide range of options. From an overall design perspective, **GWM Cannon pickup** is still a typical pickup truck, but the level of detail handling is no less exquisite than many SUV or sedan models. Coupled with its domineering posture, the overall design is quite successful. In terms of interior, the improvement of the interior of the 23 models is extremely significant, and they are also aligned with the family's higher positioning models. If not mentioned intentionally, it is difficult to distinguish whether this is actually the interior of a pickup truck. Whether in terms of material or design, the interior of the 23 passenger guns is completely high-end and has been comprehensively upgraded compared to passenger cars. Although not as smooth and smooth as the New Forces, they can still reach the common level of passenger cars in the same price range, and the richness and ease of use of their functions are far better than most pickup truck models. In terms of configuration, the gasoline compatible model we test drove, with a cost-effective price, but a satisfactory level of configuration. In addition to the documented active/passive safety configuration, it even has L2+level driving assistance, including automatic parking function. A series of common comfortable and convenient features such as front seat heating and automatic headlights on passenger cars have not been left behind, and even wireless charging is still 50W.

Specification

Manufacturer	GWM
Type	Pickup
Energy	Gasoline/Diesel Oil
Time to Market	2023.04
Engine	2.0T 190 horsepower L4
Max power	140(190Ps)
Max Torque	360 N.m
Gearbox	8-speed automatic manual transmission
Length*width*height	5416x1947x1886mm
Body Structure	4-door 5-seat Pickup
Max Speed	168km/h
Fuel consumption	9.9L/100km
Warranty	3 years or 100,000 km
Wheelbase	3230mm
Weight	2060kg
Fuel tank capacity	80L
Trunk Volume	1520x1520x540mm
Displacement	2.0L
Air intake	turbo charging
No. of cylinders	4
Max horsepower	190Ps
Max Power	140kW
Max power speed	4000-5500rpm
ROZ	92#
Oil supply method	In cylinder direct injection
Drive	Front all-wheel drive
Front suspension	Double wishbone independent suspension
Rear suspension	Integral bridge non independent suspension
Steering	Electric assistance
Parking Brake	Electronic
Tire	265/60 R18
ABS	Yes
tpms	Yes

GWM CANNON

Global smart luxury pickup truck

18 inch

aluminum alloy
wheel

L2+Level

Intelligent driving
assistance level

4WD

Four-wheel
drive form



GWM CANNON

Global smart luxury pickup truck

18 inch aluminum alloy wheel

L2+Level Intelligent driving assistance level

4WD Four-wheel drive form

LUXURY EXPERIENCE



Luxury car body



Sharp Hawk-eye LED headlights



18 "aluminum alloy wheels



Matrix intake grille



7 inch LCD instrument panel +
12.3 inch smart central control



Leather steering wheel

LUXURY EXPERIENCE

Luxury car body

18 "aluminum alloy wheels

7 inch LCD instrument panel +12.3 inch smart central control

Sharp Hawk-eye LED headlights

Matrix intake grille

9Leather steering wheel

INTELLIGENT



Reevolution of higher intelligence



Mobile phone Bluetooth key



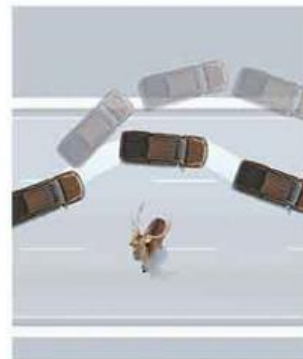
a new generation of car networking



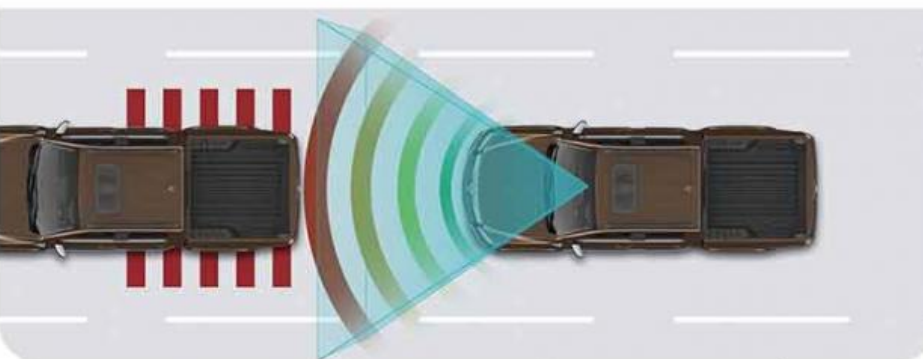
L2+ level intelligent driving control



Fully automatic parking system



Tired driving reminder



Low speed emergency braking, Intelligent emergency call

INTELLIGENT

- Reevolution of higher intelligence
- Mobile phone Bluetooth key
- a new generation of car networking
- Fully automatic parking system
- L2- level intelligent driving control

Tired driving reminder
Low speed emergency braking, Intelligent emergency call

INTELLIGENT



MORE HEART-WARMING

New steering wheel heating, front seat heating, automatic air conditioning, automatic headlights, four-door one-button upgrade & anti-clip & automatic window closing

MORE COMFORTABLE

The only 50W wireless fast charge and other intimate equipment, so that users sit down, comfortable



MORE CONVENIENT

Domestic initiative concealed cargo box board pedal

LESS WORRY

Delivery box electronic lock



UNLIMITED MODIFICATION POTENTIAL

Reserve 3 (engine room/cabin/cargo box) modification wiring harness interfaces to meet various modification requirements

2.5 TON TRACTION QUALIFICATION

The original factory has tow qualification, can tow RV, motorcycle, etc



INTELLIGENT
MORE COMFORTABLE

The only 50W wireless fast charge and another intimate equipment, so that users sitdown,comfortable
LESS WORRY Delivery box electronic lock

2.5 TON TRACTION QUALIFICATION

The original factory has tow qualification can tow RV, motorcycle, etc

MOREHEART-WARMING New steering wheel heating, front seat heating,automatic air conditioning, automatic headlights,
four-door one-button upgrade & anti-clip & automatic window closing

MORE CONVENIENT Domestic initiative concealed cargobox board pedal

UNLIMITED MODIFICATION POTENTIAL

Reserve 3(engine room/cabin/cargo box modification wiring harness interfaces tomeet various modification requirements

IMPETUS

2.0T
ENGINE



IMPETUS

2.0T+8AT
GOLD POWER
COMBINATION



2.0T ENGINE

2.0T+8AT GOLD POWER COMBINATION

HOT SELLING COLORS SHOW



● BLACK



○ WHITE



● RED



● BLUE



● SILVER

HOT SELLING COLORS SHOW
BLACK,WHITE,RED,BLUE,SILVER

Changcheng Pao GWM Cannon 2023 Passenger 2.0T Gasoline Diesel Oil Automatic 4WD Premium GW4C20B High Quality Pickup

RUICHENG Chengdu Ruicheng Automobile Service Co., Ltd.

☎ 19158810053

✉ mango@ruichengauto.com

🌐 electriccars-ev.com

Hall 5, No. 1, Yinhe Road, Damian Street Chengdu City, Sichuan Province, China