

Left Hand Drive Porsche Cayenne Medium Large Size SUV 5 Colors

Our Product Introduction

for more products please visit us on electriccars-ev.com

Basic Information

- Place of Origin: China
- Brand Name: Porsche
- Certification: VDA, TUV ,ISO
- Model Number: Cayenne
- Minimum Order Quantity: 1
- Price: \$120000-135000/units
- Packaging Details: by sea, by trailer, rail via containers, LCL and RO-RO vessel
- Delivery Time: 7 working days
- Payment Terms: L/C, D/A, D/P, T/T, Western Union, MoneyGram
- Supply Ability: 1-10 units 15 - 20 working days, 10-30 units 20-30 working days, 30-50 units ≥30 working days

R·CHENG

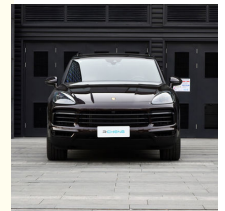
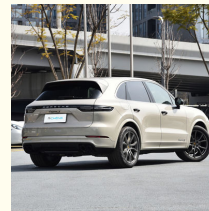


Product Specification

- Product Name: Porsche Cayenne Cayenne 3.0T
- Steering: Left
- Fuel: Gas/Petrol
- Dimension: 4930x1983x1698MM
- Type: SUV
- Seats: 5
- Highlight: Porsche Cayenne Large Size SUV, VDA Left Hand Drive SUV



More Images



Product Description

Left Hand Drive Porsche Cayenne Medium Large Size SUV From China To Worldwide 5 Colors

Porsche Cayenne

Production Configuration

Manufacturer	Porsche
Type	SUV
Energy	Gasoline
Time to Market	2023.04
Engine	3.0T 353ps V6
Max power	260(353Ps)
Max Torque	500 N.m
Gearbox	8-speed automatic manual transmission

Our Product Introduction

Lengh*width*height	4930x1983x1698mm
Body Structure	5-door 5-seat SUV
Max Speed	248km/h
Fuel consumption	12.9L/100km
Warranty	3 years or 100,000 km
Wheelbase	2895mm
Weight	2133kg
Fuel tank capacity	90L
Trunk Volume	698-1708L
Displacement	3.0L
Air intake	turbo charging
No. of cylinders	6
Max horsepower	353Ps
Max Power	260kW
Max power speed	5400-6400rpm
ROZ	95#
Oil supply method	In cylinder direct injection
Drive	Front-engine, all-wheel drive
Front suspension	Multi link independent suspension
Rear suspension	Multi link independent suspension
Steering	Electric assistance
Parking Brake	Electronic
Tire	275/45 R20, 305/40 R20
Skylight	Openable panoramic sunroof
Seat material	Genuine leather

Products Description

Porsche Cayenne



CAYENNE COMMUTE ONE DAY,CROSS COUNTRY THE NEXT, OR RACE TRACK
 maximum power 260KW
 0-100 km/h/acceleration time 6.0s
 max speed(China) 248km/h



A NEW FRONTIER

More than 20 years ago, we asked ourselves: What else can a sports car offer besides personality? Cayenne has the answer. Today, it is still improving itself. To those who dare to stand alone.

Commuting today, off-road tomorrow, or racing on the track - the new Cayenne features a typical Porsche design that makes driving fun in any situation.



A NEW FRONTIER

More than 20 years ago, we asked ourselves: What else can a sports car offer besides personality? Cayenne has the answer. Today, it is still improving itself. To those who dare to stand alone.

Commuting today, off-road tomorrow, or racing on the track - the new Cayenne features a typical Porsche design that makes driving fun in any situation.



ON-ROAD AND OFF-ROAD PERFORMANCE

In addition to road comfort and sportiness, the enhanced chassis system also improves the vehicle's performance on rough terrain

LED MAIN HEADLIGHT WITH MATRIX BEAM

The optional high resolution LED matrix headlights have more than 64,000 HD pixels and their functionality has been further improved



DRIVER-CENTERED DESIGN CONCEPT

For the first time on the new Cayenne model: Operation and display design with a new driver-centric design concept, designed for driving

INFOTAINMENT SYSTEM

The infotainment system's word interaction channel has been greatly expanded to support Apple CarPlay and Bilibili in-car video. For example, video can be transmitted to the front passenger display while driving



AUXILIARY SYSTEM

All Cayenne models can be equipped with various assistance systems to further enhance driving comfort and safety

terrain LED MAIN HEADLIGHT WITH MATRIX BEAM. The optional high resolution LED matrix headlights have more than 64,000 HD pixels and their functionality has been further improved.

INFOTAINMENT SYSTEM

The infotainment system's word interaction channel has been greatly expanded to support Apple CarPlay and Bilibili in-car video. For example, video can be transmitted to the front passenger display while driving.

DRIVER-CENTERED

For the first time on the new Cayenne model: Operation and display design with a new driver-centric design concept, designed for driving.

AUXILIARY SYSTEM

All Cayenne models can be equipped with various assistance systems to further enhance driving comfort and safety.

Porsche Cayenne



Porsche Cayenne

CAR DISPLAY



interiors may vary

Porsche Cayenne

HOT SELLING COLORS SHOW



○ CREAM-COLOURED



● BLUE



● DULL-RED



● BLACK



○ WHITE

RUICHENG Chengdu Ruicheng Automobile Service Co., Ltd.

☎ 19158810053

✉ mango@ruichengauto.com

🌐 electriccars-ev.com

Hall 5, No. 1, Yinhe Road, Damian Street Chengdu City, Sichuan Province, China