

Avatar 11 2022 MMW 011 Dual Motor CATL Battery Max Range 680km Avatar 11 SUV EV

Our Product Introduction

for more products please visit us on electriccars-ev.com

Basic Information

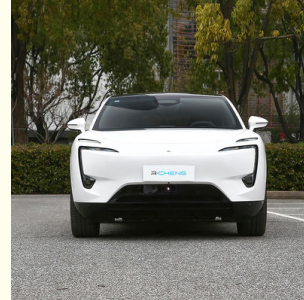
- Place of Origin: China
- Brand Name: Avata
- Certification: VDA, TUV ,ISO
- Model Number: Avata 11
- Minimum Order Quantity: 1
- Price: \$48000-82349/units
- Packaging Details: by sea, by trailer, rail via containers, LCL and RO-RO vessel
- Delivery Time: 7 working days
- Payment Terms: L/C, D/A, D/P, T/T, Western Union, MoneyGram
- Supply Ability: 1-10 units 15 - 20 working days, 10-30 units 20-30 working days, 30-50 units ≥30 working days

R-CHENG

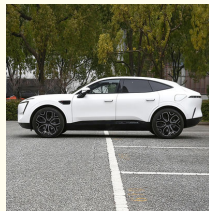
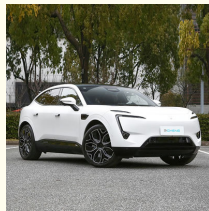
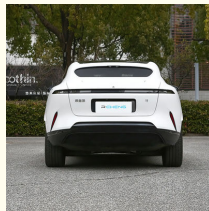


Product Specification

- Product Name: Avatar 11 2022 MMW
- Dimension: 4880x1970x1601mm
- Energy: Pure Electric
- Sunroof: Panoramic Sunroof
- Steering Position: Left Hand
- Body Structure: 4-door 4-seater SUV
- Tyre Specifications: 265/40 R22
- Highlight: Avatar 11 2022 MMW , Avatar 11 SUV , Max Range 680km SUV



More Images



Product Description

Avatar 11 2022 MMW 011 Limited Edition Long endurance dual motor CATL Battery max range 680km

Avatar 11 is the first intelligent electric vehicle under Avata Technology, positioned as an emotional intelligent electric vehicle.

On May 20, 2022, the Avatar 11 jointly created by Huawei, Changan, and Ningde Times officially opened for booking. Avatar 11 was officially launched on August 8, 2022.

Avatar 11 SUV

Production Configuration

Manufacturer	Avatar
Type	Medium to large SUVs
Time to Market	2022.08
Energy	Pure electric

Our Product Introduction

Motor	Pure electric 578 horsepower
Max range	680km
Max Speed	200km/h
Car Warranty	5 years or 120,000 km
Battery Warranty	8 years or 160,000 km
Battery capacity	116.79kWh
Battery Brand	CATL
Max power	425kW(578Ps)
Max Torque	650 N.m
Lengh*width*height	4880x1970x1601mm
Body Structure	4-door 4-seater SUV
Wheelbase	2975mm
Weight	2425kg
Trunk Volume	489L
Cruise	Cruise control, adaptive cruise control, full speed adaptive cruise control
Driving assistance imaging	Reverse image, 360 ° panoramic image, transparent image
Max horsepower	578Ps
Fast Charge	Fast charging 0.42h, Slow charging 13.5h
transmission	EV single speed transmission
Drive	Dual motor four-wheel drive
Front suspension	Double wishbone independent suspension
Rear suspension	Longitudinal arm torsion beam non independent suspension
On board intelligent system	HarmonyOS
Parking Brake	Electronic
Tire	265/40 R22
Auxiliary driving level	L2/L3
Seater Material	Nappa leather

Products Description

Avatar 11 SUV



AVATR II Emotional intelligence electric coupe SUV
 3.98s 0-100km/h acceleration
 705km CLTC endurance
 15min 30-80% fast charging

Elegant Posture Avatar 11 SUV

ELEGANT POSTURE

The appearance of power

AVATR II
SUV



ELEGANT POSTURE AVATR II SUV

The appearance of power

Frameless electric door

UFO-wing front face

21-inch low drag wheel

Star ring LED headlights

Avatar 11 SUV Steering Wheel

INTELLIGENCE

Surround dynamic ambient lighting

AVATR II
SUV



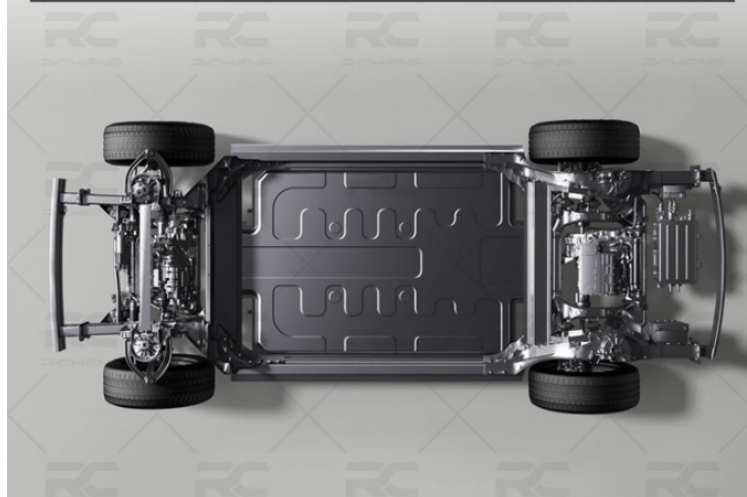
INTELLIGENCE AVATR II SuV
Surround dynamic ambient lighting
10.25-inch LCD dash board
Multi-function steering wheel
Intelligent airpurification system
15.6-inch center control screen

Avatar 11 SUV 1st One Built on the CHN Platform

ELECTRIC COUPE SUV

The first one built on the CHN platform

AVATR II
SUV



ELECTRIC COUPE SUV
AVATR II SUV
The first one built on the CHN platform

Avatar 11 SUV Display

CAR DISPLAY

AVATR II
SUV

Dual motor unstoppable race



interiors may vary

Avatar 11 SUV Colors

COLOR SHOW

Inspired by nature and life

AVATR II
SUV



○ WHITE



● GRAY



● RED



● GREEN

RC SICHENG Chengdu Ruicheng Automobile Service Co., Ltd.

☎ 19158810053

✉ mango@ruichengauto.com

🌐 electriccars-ev.com

Hall 5, No. 1, Yinhe Road, Damian Street Chengdu City, Sichuan Province, China