

GWM Tank 500 2023 Business Sports Middle Large SUV 7 Seats Great Wall Motor

Our Product Introduction

Basic Information

- Place of Origin: China
- Brand Name: GWM
- Certification: VDA, TUV ,ISO
- Model Number: Tank 500
- Minimum Order Quantity: 1
- Price: \$45000-49900/units
- Packaging Details: by sea, by trailer, rail via containers, LCL and RO-RO vessel
- Delivery Time: 7 working days
- Payment Terms: L/C, D/A, D/P, T/T, Western Union, MoneyGram
- Supply Ability: 1-10 units 15 - 20 working days, 10-30 units 20-30 working days, 30-50 units ≥30 working days

R-CHENG

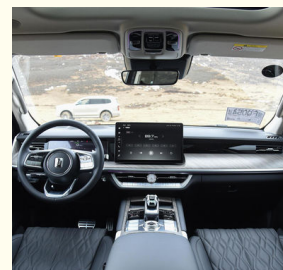
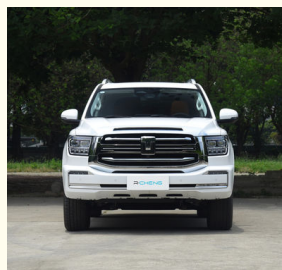


Product Specification

- Product Name: GWM Tank 500
- Length * Width * Height: 4878x1934x1905mm
- Body Structure: 5-door 7-seat SUV
- Color: White
- Engery: 48V Light Hybrid
- Max Speed: 180km/h
- Highlight: 7Seats Sports Large SUV, 48V Light Hybrid Large SUV



More Images



for more products please visit us on electriccars-ev.com

Product Description

GWM Tank 500 2023 Business Sports Middle Large SUV 7 Seats Made By China Great Wall Motor

The GWM Tank 500 is a **medium-sized large SUV** that combines business, sports, and luxury. It not only has excellent performance and excellent driving experience, but also provides passengers with a comfortable, safe, and intelligent travel environment. Whether it's family travel or business meetings, the GWM Tank 500 will be your ideal choice.

Product Configuration

Manufacturer	GWM(Great Wall Motor)
Level	Middle Large SUV
Energy	48V light hybrid system
Time to Market	2023.03
Engine	3.0T 360 horsepower V6 48V light hybrid
Max power	265(360Ps)
Max Torque	500 N.m
Gearbox	9-speed automatic transmission
Length*width*height	4878x1934x1905mm
Body Structure	5-door 5-seat/7-seat SUV
Max Speed	180km/h
Fuel consumption	11.19L/100km
Warranty	5 years or 150,000 km
Weight	2565kg
Fuel tank capacity	80L
Trunk Volume	-
Displacement	3.0L
Air intake	Twin Turbo
No. of cylinders	6
Max horsepower	360Ps
Max Power	265kW
Max power speed	6000rpm
ROZ	95#
Oil supply method	Mixed jet
Drive	Front-engine, 4-wheel drive
Front suspension	Double wishbone independent suspension
Rear suspension	Integral bridge non independent suspension
Steering	Electric assistance
Parking Brake	Electronic
Tire	265/55 R19
ABS	Yes
tpms	Yes
Seat Materials	Leather

GWM Tank 500 Large Luxury SUV

TANK 500

LARGE LUXURY OFF-ROAD SUV

3.0-LITER V6

Twin turbocharged engines

9 AT

Clutch transmission

4WD

Intelligent four-wheel drive



LARGE LUXURY OFF-ROAD SUV

3.0-LITER V6 Twin turbo charged engines

9 AT Clutch transmission

4WD Intelligent four-wheel drive

GWM Tank 500 Shakes the World

A SUV THAT SHAKES THE WORLD



AUTOMATIC ELECTRIC REAR DOOR

Automatic electric rear door, emphasis on practical usage and flexible control at the same time

SHIELD-SHAPED INTAKE GRID

Majestic intake grille with a domineering spirit, unforgettable view for everyone



FOLLOW THE LINES

Simple and powerful lines, outline the full tension of the upright posture



AUTOMATIC ELECTRIC REAR DOOR Automatic electric rear door, emphasis on practical usage and flexible control at the same time

SHIELD-SHAPED INTAKE GRID Majestic intake grille with a domineering spirit, unforgettable view for everyone

FOLLOW THE LINES Simple and powerful lines, outline the full tension of the upright posture

GWM Tank 500 Motor



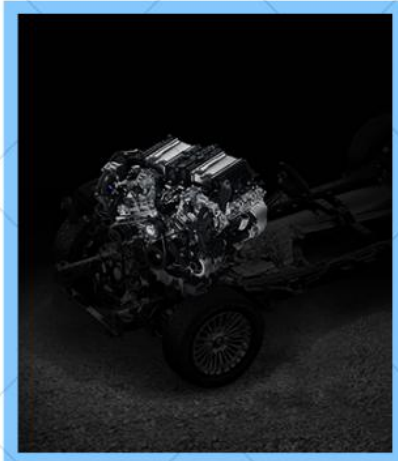
THE MAJESTIC REALM



Vertical 9 AT transmission ▶

3.0-liter V6 twin-turbo engine ▼

A new generation of intelligent four-wheel drive ◀



Vertical 9 AT transmission
3.0-liter V6 twin-turbo engine
A new generation of intelligent four-wheel drive

GWM Tank 500 Full of Luxury



FULL OF LUXURY





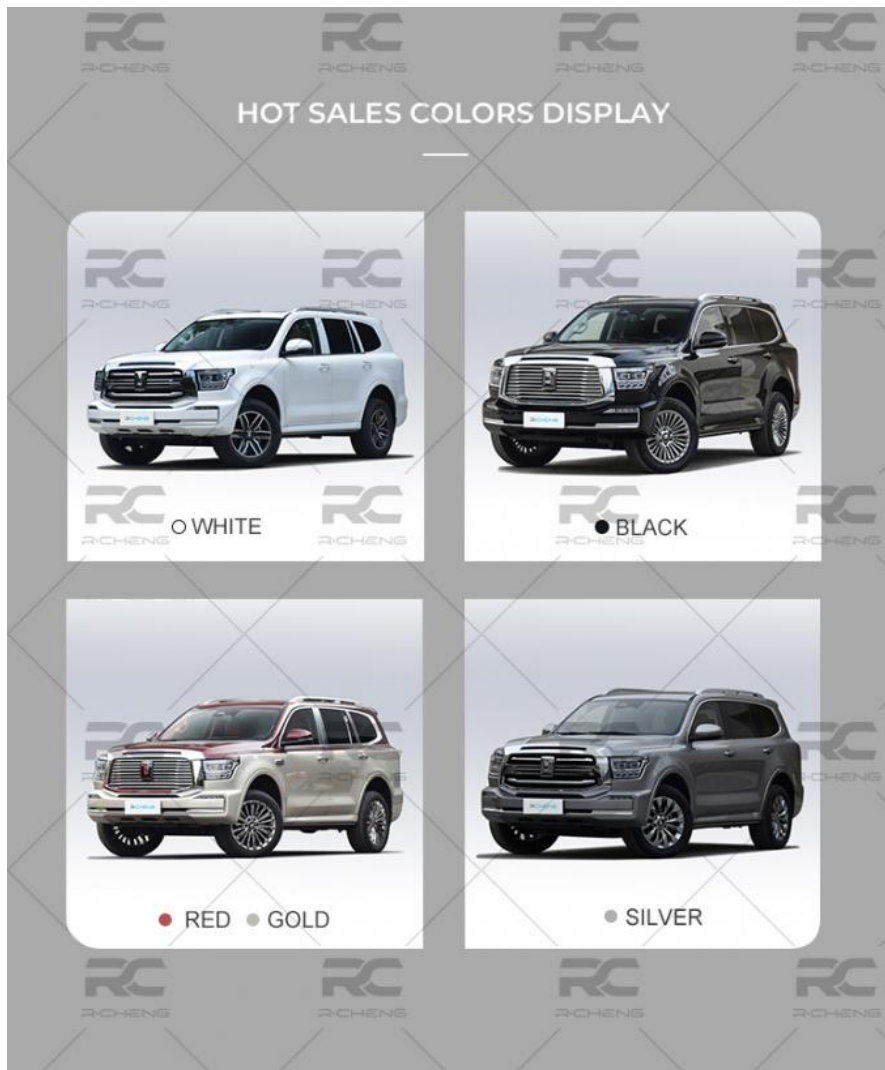
GWM Tank 500 Inside Display

CAR DISPLAY



interiors may vary

Hot Sales Colors



4 colors available: White, Black, Golden-Red, Silver

Brand Story

Great Wall Motor Company Limited (hereinafter referred to as "GWM") is a world-renowned SUV and pickup manufacturer. It was listed on the Hong Kong Stock Exchange in 2003 and the Shanghai Stock Exchange in 2011. By the end of 2018, its assets had reached 111.8 billion yuan.

GWM owns four brands, which are HAVAL, WEY, ORA and GWM Pickup.


The products cover three categories: SUV, passenger car and pickup. With over 70 holding subsidiaries, GWM has more than 59,000 employees. On July 10, 2018, GWM and BMW Holding B.V. formally signed a joint venture agreement to establish Spotlight Automotive Ltd.

Send an Inquiry to know more regarding GWM Tank 500 SUV and Get Best Price

 **Chengdu Ruicheng Automobile Service Co., Ltd.**

 19158810053

 mango@ruichengauto.com

 electriccars-ev.com

Hall 5, No. 1, Yinhe Road, Damian Street Chengdu City, Sichuan Province, China