

## Wheelbase 2820mm Tang DMI BYD Luxury Electric Hybrid Car

Our Product Introduction

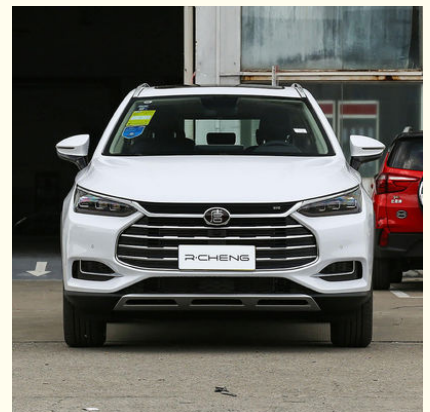
### Basic Information

- Place of Origin: China
- Brand Name: BYD
- Certification: VDA, TUV ,ISO
- Model Number: Tang DMI
- Minimum Order Quantity: 1
- Price: \$25000-28000/units
- Packaging Details: by sea, by trailer, rail via containers, LCL and RO-RO vessel
- Delivery Time: 7 working days
- Payment Terms: L/C, D/A, D/P, T/T, Western Union, MoneyGram
- Supply Ability: 1-10 units 15 - 20 working days, 10-30 units 20-30 working days, 30-50 units ≥30 working days

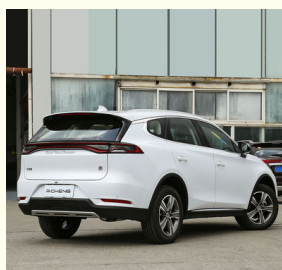
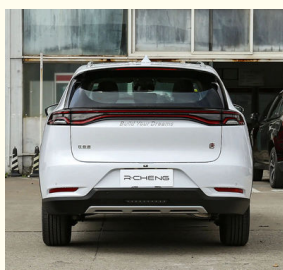


### Product Specification

- Product Name: Byd Tang DMI
- Length \* Width \* Height: 4900\*1950\*1725MM
- Body Structure: 6/7 Seater SUV
- Fuel: Electric Or Petrol
- Steering: Left
- Battery Type: Lithium Iron Phosphate Battery
- Vehicle Weight: 2445kg
- Tyre Specifications: 255/50 R20
- Motor Torque: 325n.m
- Battery Capacity: 45.8KWH
- Wheelbase: 2820mm
- Highlight: fast 0.65h hybrid powered electric car , hybrid powered electric car fast 0.65h , hybrid powered electric cars fast 0.65h



### More Images



for more products please visit us on [electriccars-ev.com](http://electriccars-ev.com)

## Product Description

## Byd Tang DMI

2022 New Energy Car New Energy Tang DMI high speed Luxury SUV Electric Hybrid Car

## Production Configuration

Battery Capacity	45.8KWH
Charging Time	Fast 0.65H
Motor Power	160+200KW(Dual Motor)
MAX. Range	1200km(252KM Pure Electric )
MAX. Speed	180km/h
Vehicle Weight	2445kg
Tyre Specifications	255/50 R20
Length*Width*Height	4870x1950x1725mm
Driving Direction	Left-hand Drive
Body Structure	5 Doors and 7 Seats SUV
Battery Type	Lithium Iron Phosphate Battery
Steering Wheel Assistance	Electric Steering Wheel Assist
Light Type	LED Dragon Style
Battery Warranty	Life time warranty for battery cell
Motor Torque	325n.m
Wheelbase	2820mm
Seat	5
Front Suspension	McPherson lindependent Suspension
Rear Suspension	Multi-link independent suspension
Steering System	Electric
Parking Brake	Electric
Braking System	Front Disc +Rear Dsic
ABS	Yes
ESC	Yes
Radar	Front 4 + Rear 4
After The Camera	360°
Skylight	Sunroof
Steering Wheel	Multi-function
Seat Material	Leather
Driver Seat Adjustment	Electric

Passenger Seat Adjustment	Electric
Touch Screen	12.8' Touch screen

## Products Description



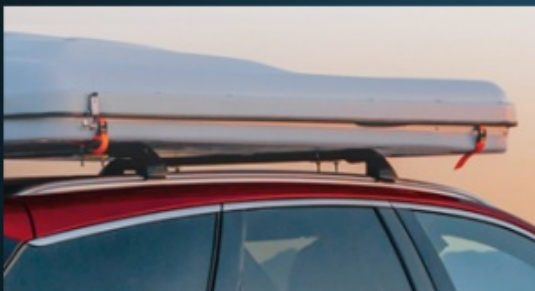
**1200km Comprehensive endurance**

**5.5L Fuel consumption when battery power loss**

**4.3s 0~100KM/H Acceleration**

## High safety strength body

- Aluminum alloy integrated roof rack
- Floating dragon crystal LED headlights
- Same color door handle of the body
- Rear/rear wind window black privacy glass



### High safety strength body

Aluminum alloy integrated roof rack  
Floating dragon crystal LED headlights  
Same color door handle of the body  
Rear/rear wind window black privacy glass



## 5G Danna Smart Music cockpit

- 2+3+2 seating layout
- Dragon scale luxury leather seats
- 12.3 inch combined LCD instrument
- Multi-functional D sports steering wheel



### 5G Danna Smart Music cockpit

2+3+2 seating layout

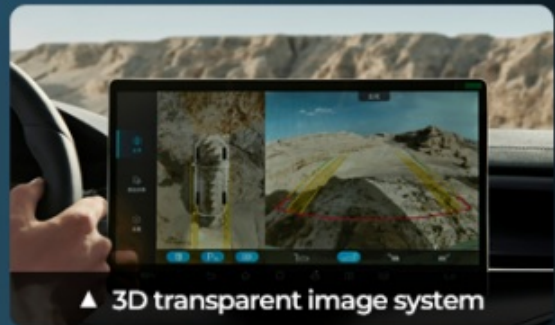
Dragon scale luxury leather seats

12.3 inch combined LCD instrument

Multi-functional D sports steering wheel



▲ (5G) intelligent network system



▲ 3D transparent image system



▲ W-HUD head display



▲ Intelligent health ecological cabin

### ▲ (5G) intelligent network system

3D transparent image system

W-HUD head display

Intelligent health ecological cabin



## VTOL mobile power station

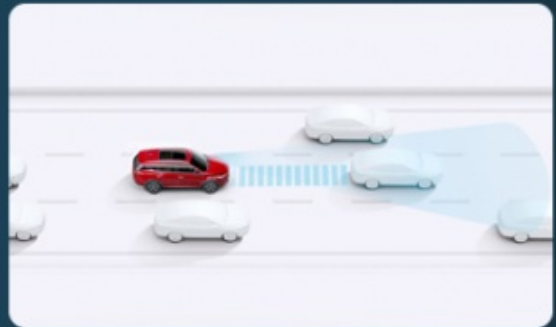
- Maximum external discharge power of 6kW ▪
- 220V AC socket in car (2.2kW) ▪

### ▲ VTOL mobile power station

Maximum external discharge power of 6kW  
220V AC socket in car (2.2kW)

## Intelligent safety assisted driving

LCA parallel assist & BSD blind spot monitoring & AEB active brake  
ICC intelligent piloting & LKS active lane keeping



### Intelligent safety assisted driving

LCA parallel assist & BSD blind spot monitoring & AEB active brake  
ICC intelligent piloting & LKS active lane keeping

Production Color Show



## HOT SELLING COLORS SHOW



○ WHITE



● BLACK



● BLUE



● GREY



● RED

**RUICHENG** Chengdu Ruicheng Automobile Service Co., Ltd.

☎ 19158810053

✉ [mango@ruichengauto.com](mailto:mango@ruichengauto.com)

🌐 [electriccars-ev.com](http://electriccars-ev.com)

Hall 5, No. 1, Yinhe Road, Damian Street Chengdu City, Sichuan Province, China