

High Configuration BYD Han Electric Car EV 4 Door 5 Seat Sedan

Our Product Introduction

Basic Information

- Place of Origin: China
- Brand Name: BYD
- Certification: VDA, TUV ,ISO
- Model Number: HAN EV
- Minimum Order Quantity: 1
- Price: \$28000-30000/units
- Packaging Details: by sea, by trailer, rail via containers, LCL and RO-RO vessel
- Delivery Time: 7 working days
- Payment Terms: L/C, D/A, D/P, T/T, Western Union, MoneyGram
- Supply Ability: 1-10 units 15 - 20 working days, 10-30 units 20-30 working days, 30-50 units ≥30 working days

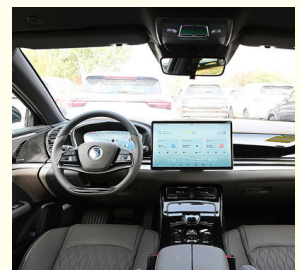


Product Specification

- Product Name: BYD HAN EV
- Steering Position Left Hand Drive: Left Hand Drive
- Charging Time: Fast Charge 0.5 Hours
- Color: Gray/Black/Red/White/Blue
- Body Style: 4 Door 5 Seat Sedan
- Length*Width*Height: 4995x1910x1495mm
- Battery Warranty: Lifetime Warranty For First Owner
- Vehicle Weight: 2250KG
- Motor Torque: 245n.m
- Wheelbase: 2920mm
- Front Suspension: McPherson Independent Suspension
- Rear Suspension: Multi-link Independent Suspension
- Highlight: **BYD HAN EV 4 door 5 seat sedan, High Configuration byd han electric car, han byd car 4 door 5 seat sedan**



More Images



for more products please visit us on electriccars-ev.com

Product Description

BYD HAN EV

2022 Hot selling Electric Vehicle BYD HAN EV New China High Configuration New Energy Sedan In Stock

Product Configuration

Battery Capacity	76.9 KWH
Charging Time	Fast 0.42 H
Motor Power	222ps
MAX. Range	Fast 0.42 H
MAX. Speed	185 km / h
Vehicle Weight	2250KG
Tyre Specifications	245/45 R19
Length*Width*Height	4995x1910x1495mm
Driving Direction	Left-hand Drive
Body Structure	Four Doors and Five Seats
Battery Type	Lithium Iron Phosphate Battery
Steering Wheel Assistance	Electric Steering Wheel Assist
Light Type	LED
Battery Warranty	Lifetime warranty for first owner
Motor Torque	330 n.m
Wheelbase	2920mm
Seat	5
Front Suspension	McPherson Independent Suspension
Rear Suspension	Multi-link Independent Suspension
Steering System	Electric
Parking Brake	Electric
Braking System	Front Disc +Rear Dsic
ABS	Yes
ESC	Yes
Radar	Front +Rear
After The Camera	360° Image
Skylight	Panoramic Sunroof
Steering Wheel	Multi-function
Seat Material	Leather
Driver Seat Adjustment	Electric
Passenger Seat Adjustment	Electric
Touch Screen	Yes

Products Description

BYD HAN EV

The epitome of world-class design combining
efficiency with supreme luxury

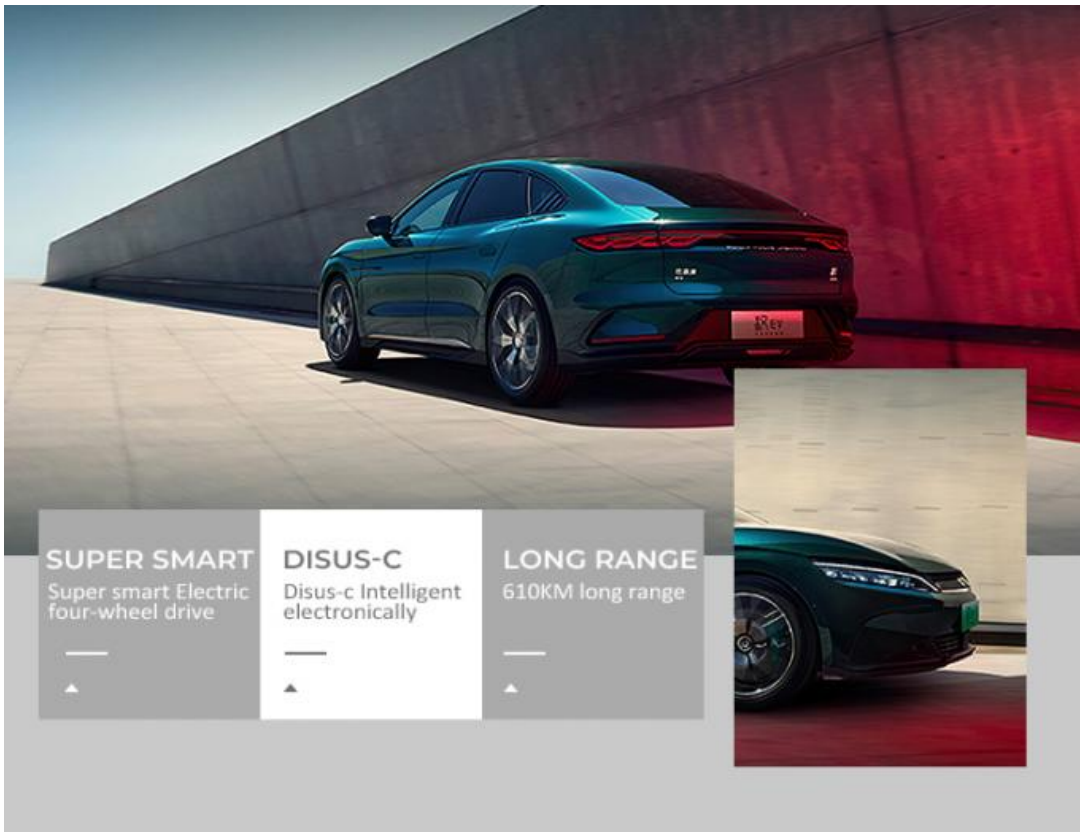
3.9S
0-100km/h

662km
WLTP combined

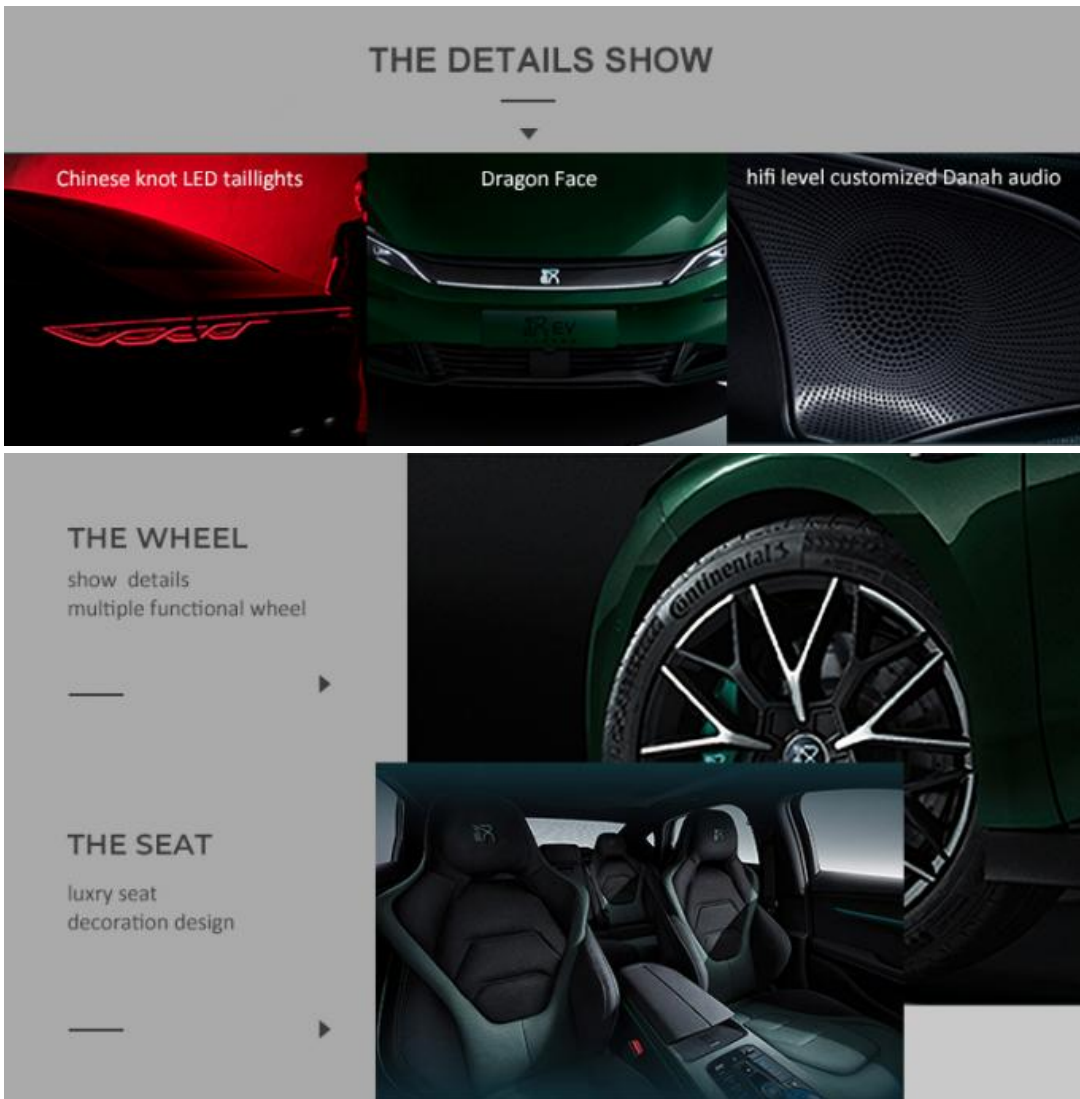
AWD
with dual motor



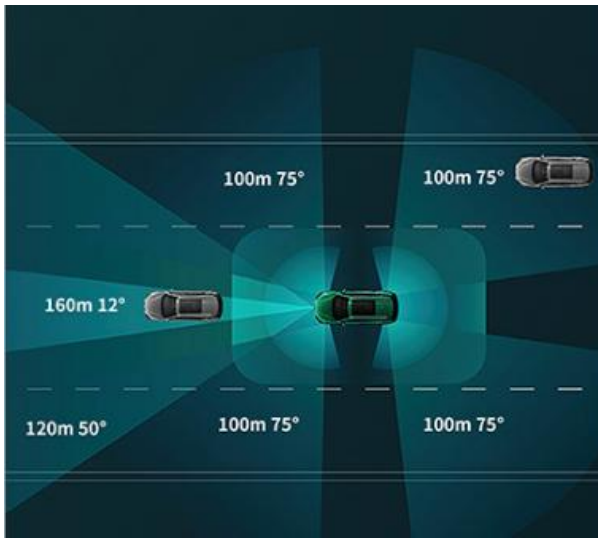
The epitome of world-class design combining efficiency with supreme luxury



HAN EV -- Hot sale



THE DETAILS SHOW



DIPILOT INTELLIGENT DRIVER ASSISTANCE SYSTEM

The whole vehicle has 12 ultra-sonic radars, 5 high-precision millimeter wave radars, 4 smart driving circumferential cameras, and 1 intelligent driving high awareness camera.

DIPILOT INTELLIGENT DRIVER ASSISTANCE SYSTEM

VTOL MOBILE POWER STATION

Maximum external discharge power 6kw



VTOL MOBILE POWER STATION

DILINK 4.0 (5G)

Intelligent network system



CLOUD SERVICES CAN ONLY BE HOUSEKEEPING



CLOUD SERVICES CAN ONLY BE HOUSEKEEPING

Product Color Show

HOT SELLING COLORS SHOW



● BLUE



● RED



● GRAY



● BLACK



● WHITE

RUICHENG Chengdu Ruicheng Automobile Service Co., Ltd.

☎ 19158810053

✉ mango@ruichengauto.com

🌐 electriccars-ev.com

Hall 5, No. 1, Yinhe Road, Damian Street Chengdu City, Sichuan Province, China