

Tesla MODEL Y New Energy Vehicle Electric Medium SUV 217km/H

Our Product Introduction

Basic Information

- Place of Origin: China
- Brand Name: Tesla
- Certification: VDA, TUV ,ISO
- Model Number: Model Y
- Minimum Order Quantity: 1
- Price: \$20000-26000/units
- Packaging Details: by sea, by trailer, rail via containers, LCL and RO-RO vessel
- Delivery Time: 7 working days
- Payment Terms: L/C, D/A, D/P, T/T, Western Union, MoneyGram
- Supply Ability: 1-10 units 15 - 20 working days, 10-30 units 20-30 working days, 30-50 units ≥30 working days

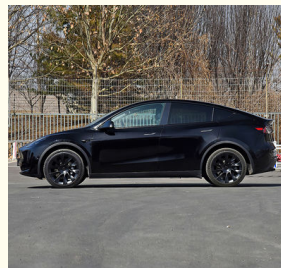


Product Specification

- Product Name: Tesla MODEL Y
- Fuel: 100% Electric
- Body Structure: 5 Seats Sedan
- Steering: Left
- Length * Width * Height: 4750*1921*1624MM
- Charging Time: "Fast Charging For 1 Hour, Slow Charging For 10 "
- MAX. Range: 660 Km
- Tyre Specifications: 255/45 R19
- Battery Capacity: 78.4KWH
- MAX. Speed: 217km / H
- Vehicle Weight: 1997KG
- Highlight: Tesla MODEL Y EV 217km/h,
Tesla MODEL Y electric medium suv,
Tesla MODEL Y New Energy Vehicle



More Images



for more products please visit us on electriccars-ev.com

Product Description

Hot Sell Tesla Model Y New Ev Car 217km/h High Speed New Energy Vehicle Medium SUV Electric Car Production Configuration

Battery Capacity	78.4KWH
Charging Time	Fast charging for 1 hour, slow charging for 10 hours
Motor Power	331(450Ps)
MAX. Range	660 km
MAX. Speed	217 km / h
Vehicle Weight	1997KG
Tyre Specifications	255/45 R19
Length*Width*Height	4750x1921x1624mm
Driving Direction	Left-hand Drive
Body Structure	5-door 5-seat Three Compartment Car
Battery Type	Ternary Lithium Battery
Steering Wheel Assistance	Electric Steering Wheel Assist
Light Type	LED
Battery Warranty	80,000 km in 8 years
Motor Torque	559 n.m
Wheelbase	2890mm
Seat	5
Front Suspension	McPherson Independent Suspension
Rear Suspension	Multi-link Independent Suspension
Steering System	Electric
Parking Brake	Electric
Braking System	Front Disc +Rear Dsic
ABS	Yes
ESC	Yes
Radar	Front 4+Rear 4
After The Camera	360°
Skylight	Sunroof
Steering Wheel	Multi-function
Seat Material	Leather
Driver Seat Adjustment	Electric
Passenger Seat Adjustment	Electric
Touch Screen	Yes

Our Product Introduction

for more products please visit us on electriccars-ev.com

Tesla MODEL Y EV

Products Description

TESLA MODEL Y

2100+

Increase storage space

660km

CLTC comprehensive
operating condition

all-wheel drive

dual-motor



TESLA MODEL Y



ALL-WHEEL DRIVE DUAL MOTORS

Tesla's all-wheel drive system is equipped with two ultra-sensitive independent motors to accurately control the front and rear wheel torques in a digital way. With this system, you can easily cope with rain, snow, mud and off-road environment.



ALL WHEEL DRIVE DUAL MOTORS

EXTRA LARGE STORAGE SPACE



The Model Y combines comfort with practicality and can accommodate five passengers and their carry-on luggage. Each seat in the second row can be folded and placed separately to carry skis, small furniture, luggage and other items. Hatchback doors directly into the bottom of the trunk, large caliber open and close, easy to pick up and put items.

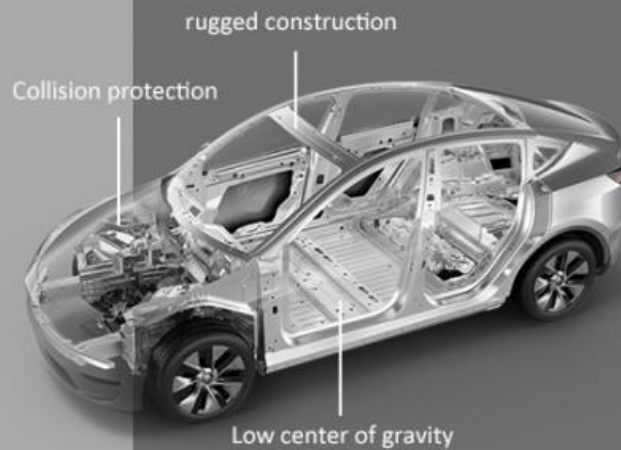


The interior of the Model 3 is unique. You can control the car through a 15-inch touchscreen, or you can use your smartphone as a key and access all the driving control options on the touchscreen. Panoramic glass roof, the whole piece of glass extends from the roof of the front hatch to the roof, so that both front and rear passengers have a wide view.

EXTRA LARGE STORAGE SPACE

DESIGN FOR SAFETY FIRST

Like other Tesla cars, Model Y has made safety a top priority from the beginning. Its gravity center is located in the middle of the bottom part. It also has a high strength body structure and ample impact buffer, which effectively reduces the risk of injury.



360°

Front -, side - and tail-side cameras, with a 360-degree field of view



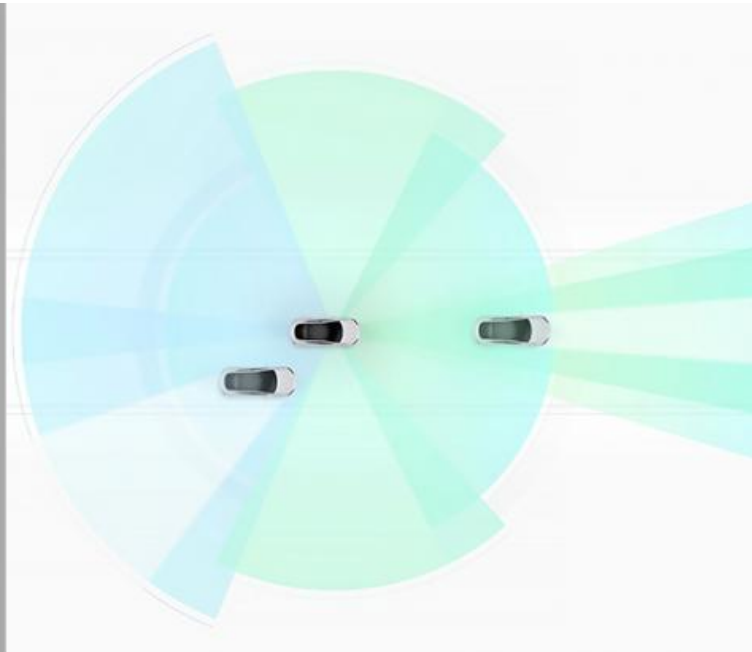
250M

Powerful visual processing capability, detection range up to 250 meters



TESLA VISION'S

Tesla Vision's visual processing system can detect nearby vehicles to reduce the risk of collisions and assist parking



DESIGN FOR SAFETY FIRST

Production Color Show

HOT SELLING COLORS SHOW



RUICHENG Chengdu Ruicheng Automobile Service Co., Ltd.

☎ 19158810053

✉ mango@ruichengauto.com

🌐 electriccars-ev.com

Hall 5, No. 1, Yinhe Road, Damian Street Chengdu City, Sichuan Province, China