

360kW Dual Motor NIO ET5 Chinese EV Car With 710km Cruising Range

Our Product Introduction

Basic Information

- Place of Origin: China
- Brand Name: NIO
- Certification: VDA, TUV, ISO
- Model Number: ET5
- Minimum Order Quantity: 1
- Price: \$33600-35600/units
- Packaging Details: by sea, by trailer, rail via containers, LCL and RO-RO vessel
- Delivery Time: 7 working days
- Payment Terms: L/C, D/A, D/P, T/T, Western Union, MoneyGram
- Supply Ability: 1-10 units 15 - 20 working days, 10-30 units 20-30 working days, 30-50 units ≥30 working days.

R·CHENG

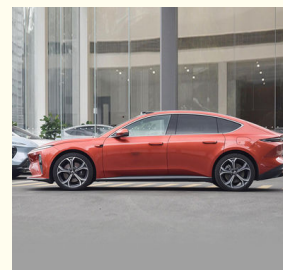
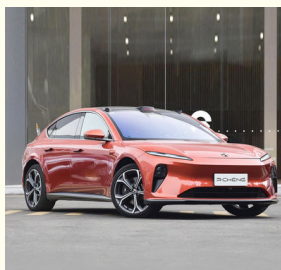
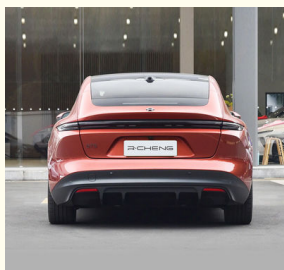


Product Specification

- Product Name: NIO
- Steering Position: Left Hand Drive
- Battery Type: Lithium Iron Phosphate Battery
- Body Style: 5 Door 5 Seat Car
- Fuel Type: 100% Electric
- Power: 360kW Dual Motor
- Battery Energy: 100KWH
- Highlight: Chinese EV Car 710km Cruising Range, NIO ET5 Chinese EV Car, NIO ET5 710km Cruising Range



More Images



for more products please visit us on electriccars-ev.com

Product Description

NIO ET5

Popular NIO ET5 Senior Version Electric Car with 710km Cruising Range, Fast Charging Function and Strong Power

Product Configuration

Battery Capacity	100KWH
Charging Time	Fast 0.78 hour, Slow 10 hours
Motor Power	360kW/490ps
MAX. Range	710 km
MAX. Speed	200 km / h
Vehicle Weight	2185KG
Tyre Specifications	245/45 R19
Length*Width*Height	4790x1960x1499 mm
Driving Direction	Left-hand Drive
Body Structure	4 Doors, 5 Seats
Battery Type	Ternary Lithium Battery
Steering Wheel Assistance	Electric Steering Wheel Assist
Light Type	LED
Battery Warranty	Unlimited Years/Mileage For The First Owner
Motor Torque	280+420 n.m(dual motor)
Wheelbase	2888 mm
Seat	5
Front Suspension	Multi-link Independent Suspension
Rear Suspension	Multi-link Independent Suspension
Steering System	Electric
Parking Brake	Electric
Braking System	Front Disc +Rear Dsic
ABS	Yes
ESC	Yes
Radar	18 pcs Rear
After The Camera	360°
Skylight	Sunroof
Steering Wheel	Multi-function
Seat Material	Leather
Driver Seat Adjustment	Electric

Passenger Seat Adjustment	Electric
Touch Screen	Yes

Product Description

NIO ET5

Inherit the high performance gene of Nio brand

4s
0-100km/h acceleration

33.8m
100km braking

1000km
CLTC endurance mileage



Inherit the high performance gene of Nio brand

4s 0-100km/h acceleration
33.8m 100km braking
1000km CLTC endurance mileage

Sliding back molding

The roof line is smooth and light, and naturally extends back



Sliding back molding

The roof line is smooth and light, and naturally extends back

Nio family front face design

1.28m² pan-oramic glass canopy

Rimless door



Six interior colors

The colored areas include seats, door panels, dashboard, as well as the steering wheel and seat belts.

Nio ES8

- ▲ 12.8' Center Panel
- ▲ NOMI
- ▲ Sports seat

NIO AUTONOMOUS DRIVING

It is our vision to make the car a safe and free mobile living space



Ultra-long range high precision lidar

- Horizontal Angle of view 120°
- Maximum resolution 0.06°x0.06°



Ultra-long range high precision lidar

Horizontal Angle of view 120°

Maximum resolution 0.06°x0.06°

Look sharp and ready to go

With each acceleration, we can easily split the air and ride the wind



▲ Intelligent four-wheel drive



▲ Steel and aluminum hybrid body

Look sharp and ready to go

With each acceleration, we can easily split the air and ride the wind

- ▲ Intelligent four-wheel drive
- ▲ Steel and aluminum hybrid body

HOT SELLING COLORS SHOW



● PINK

● GREY



● GREEN



● BLACK



● ORANGE



● YELLOW



● LIGHT BLUE



● DARK BLUE



19158810053



mango@ruichengauto.com



electriccars-ev.com

Hall 5, No. 1, Yinhe Road, Damian Street Chengdu City, Sichuan Province, China