

## 12.3" Touch Screen OTA Wireless Upgrade Toyota Corolla Sedan 190KM/H

### Basic Information

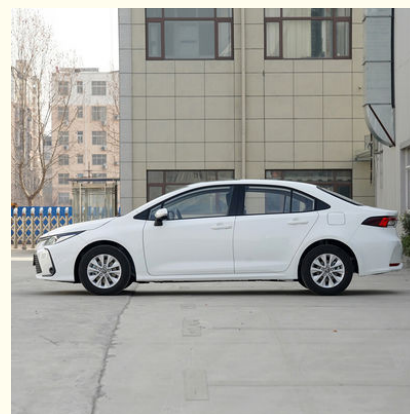
- Place of Origin: China
- Brand Name: Toyota
- Certification: VDA, TUV ,ISO
- Model Number: Corolla
- Minimum Order Quantity: 1
- Price: \$15000-17000/units
- Packaging Details: by sea, by trailer, rail via containers, LCL and RO-RO vessel
- Delivery Time: 7 working days
- Payment Terms: L/C, D/A, D/P, T/T, Western Union, MoneyGram
- Supply Ability: 1-10 units 15 - 20 working days, 10-30 units 20-30 working days, 30-50 units ≥30 working days

R·CHENG

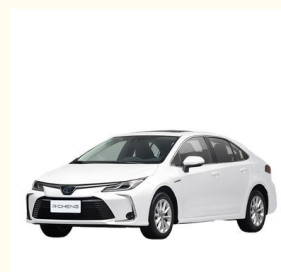
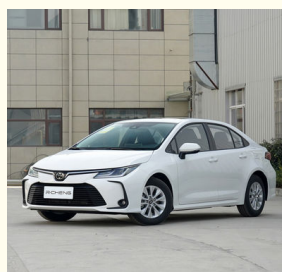
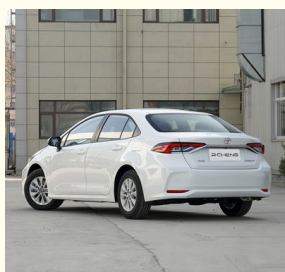


### Product Specification

- Color: Blue / White / Black / Red / Silver
- Screen Size: 12.3"
- Screen: 12.3" Touch Screen
- Length\*Width\*Height (mm): 4635\*1780\*1435
- Max. Speed (KM/H): 180
- Vehicle Weight (kg): 1695
- Fuel Type: Gasoline
- Displacement (L): 1.5 L
- Driving Assistance Video: 360° & Reversing Image
- General Oil Consumption (NEDC): 5.1
- Highlight: OTA Wireless upgrade corolla sedan, corolla sedan Gas Powered Car, Toyota corolla Gas Powered Car 190KM/H



### More Images



## Product Description

Hot Sale Auto TOYOTA Corolla Sedan Car White Economy Gas Powered Petrol Car Toyota Corolla 1.6L Engine For Sale

# Toyota Corolla

## Product Configuration

Max. Speed (km)	180KM/H
Length*Width*Height (mm)	4900*1840*1455mm
Wheelbase (mm)	2825mm
Body Structure	5 seats, 5 doors
Tire Specification	195/65 R15
Driving Mode	Front-engine Front-wheel drive layout FF
Fuel Oil Type	92# Gasline
General Oil Consumption (NEDC)	5.5L
Tank Capacity (L)	50L
Displacement (L)	1.5L
Valve Mechanism	DOHC
Fuel	Gas/Petrol
Engine Type	Turbo
Cylinders	4
Air Intake Type	Turbocharger
Front Suspension	Macpherson type independent suspension
Rear Suspension	Double Wishbone Independence Suspension
Forward Shift Number	8
Maximum Torque(N·m)	185N·m
Sunroof Type	Panoramic
Sensory Trunk	Yes
Number of Seats	5
Lane Dispatch Warning System	Yes
Cruise System	Yes
Drive	FWD
Steering System	Electric
Parking Brake	Electric
Brake System	Front disc+Rear dsic
Tire Size	R18
Airbags	6
TPMS(Tire Pressure Monitor System)	Yes
ABS(Antilock Braking System)	Yes
ESC(Electronic Stability Control System)	Yes
Radar	Front 4+Rear 2
Rear Camera	360°
Cruise Control	ACC
Sunroof	Panoramic sunroof
Roof rack	Aluminium alloy
Steering Wheel	Multi-function
Seats Material	Leather
Interior Color	Dark/Blue
Driver's Seat Adjustment	Electric
Copilot Seat Adjustment	Electric
Touch Screen	Yes
Car Entertainment System	Yes
Air Conditioner	Automatic
Headlight	LED
Daytime Light	LED
Front Window	Electric
Rear Window	Electric
Exterior Rearview Mirror	Electric adjustment
Max. Speed (km/h)	180KM/H
Vehicle Weight (kg)	1575kg
General Oil Consumption (NEDC)	6.4L
Vehicle Warranty	3 Years/ 100,000 KM

TOYOTA

# COROLLA

Meet a new landscape with a new attitude

OTA Wireless upgrade	8 SRS airbags	2700mm wheelbase
-------------------------	------------------	---------------------



**Meet a new landscape with a new attitude**

OTA Wireless upgrade  
8 SRS airbags  
2700mm wheelbase



▼ Lower weight center to create a ready posture  
Broader front face to set off a strong and deep aura



### High Speed

- ▷ Rear bumper design
- ▷ Integrated LED taillights
- ▷ 16 inch aluminum alloy Wheel



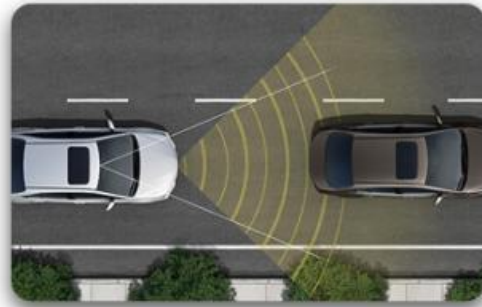


### Cool Black

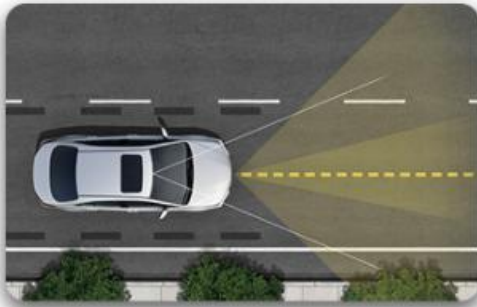
- Open centerconsole
- Intelligent fuel-saving start-stop system
- Center console trim strip
- Intelligent air conditioning system



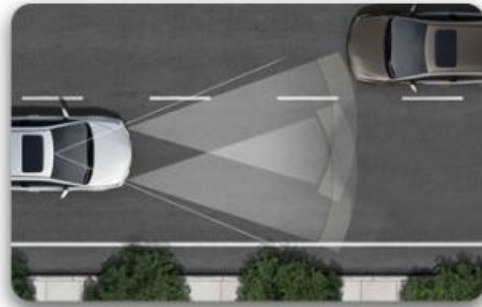
PCS pre-collision safety system



LTA lane tracking assistance system



DRCC dynamic radar cruise control system



AHB automatic adjustment high beam system



High rigidity body



Pretightening three-point seat belt

## Luxury Interior

PCS pre-collision safety system  
 LTA lane tracking assistance system  
 DRCC dynamic radar cruise control system  
 AHB automatic adjustment high beam system  
 High rigidity body  
 Pretightening three-point seat belt  
 Product Color Show

## HOT SELLING COLORS SHOW



● GRAY



● RED



● GOLDEN



● BLACK



○ WHITE

**RUICHENG** Chengdu Ruicheng Automobile Service Co., Ltd.

☎ 19158810053

✉ [mango@ruichengauto.com](mailto:mango@ruichengauto.com)

🔌 [electriccars-ev.com](http://electriccars-ev.com)

Hall 5, No. 1, Yinhe Road, Damian Street Chengdu City, Sichuan Province, China