

Left Hand Steering Nissan X-Trail Gasoline Automobile Japanese Cars 200km/H

Our Product Introduction

Basic Information

- Place of Origin: China
- Brand Name: Nissan
- Certification: VDA, TUV ,ISO
- Model Number: X-Trail
- Minimum Order Quantity: 1
- Price: \$17000-20000/units
- Packaging Details: by sea, by trailer, rail via containers, LCL and RO-RO vessel
- Delivery Time: 7 working days
- Payment Terms: L/C, D/A, D/P, T/T, Western Union, MoneyGram
- Supply Ability: 1-10 units 15 - 20 working days, 10-30 units 20-30 working days, 30-50 units ≥30 working days

R-CHENG

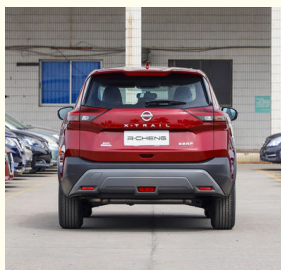


Product Specification

- Product Name: Nissan X-Trail
- Body Structure: 5-door 5-seater SUV
- Fuel: Gas/Petrol
- Dimension: 4681*1840*1730mm
- Steering Position: Left Hand
- Max.speed(km/h): 200km/h
- Highlight: Nissan X-Trail Gasoline Automobile,
Gasoline Automobile 200km/h,
Nissan X-Trail japanese cars



More Images



Product Description

Vehicles Nissan X-Trail Petrol Cars For Sale Cheap Cars Gasoline Automobiles Vehicles China LED 2023

Nissan X-Trail

Products Description



Power aesthetic design is inherently confident

Torque:300N·m

Strong power output

Fuel consumption of 100km: 6.63L

Intelligent full mode: 4-drive

Our Product Introduction

for more products please visit us on electriccars-ev.com

► The new V-Motion 3.0 design language interprets the aesthetic concept of power



Nissan X-Trail

The new V-Motion 3.0 design language interprets the aesthetic concept of power



Nissan Connect Super Smart 2.0

Full size super three screen linkage

- ▶ 4681mm vehicle length
- ▶ 1730mm vehicle height
- ▶ 2706mm wheelbase
- ▶ 212mm ground clearance



▲ "Double V-Motion" front face



▲ LED split starship headlights



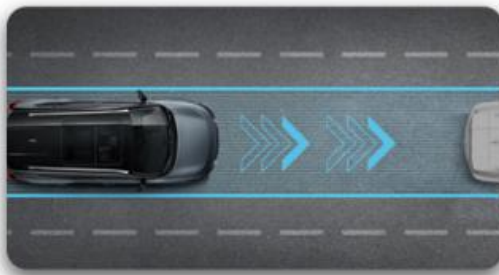
▲ 19 inch cut aluminum alloy wheel



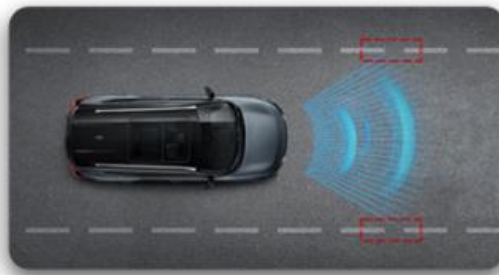
▲ Double-edged taillights

Details

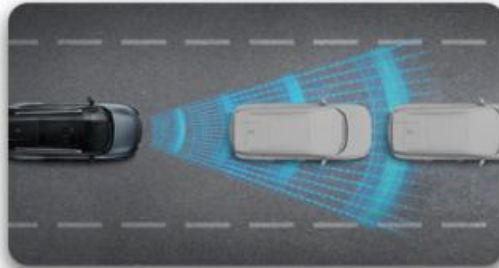
4681mm vehicle length
1730mm vehicle height
2706mm wheelbase
212mm ground clearance
"Double V-Motion" front face
19 inch cut aluminum alloy wheel
LED split starship headlights
Double-edged taillights



▲ ICC Intelligent Adaptive Cruise



▲ LDW lane departure warning



▲ IFCW beyond visual range collision warning



▲ EAPM throttle misstep correct



▲ AVM panoramic intelligent monitoring



▲ MOD Moving object/pedestrian alert

Safety

ICC Intelligent Adaptive Cruise
AIFCW beyond visual range collision warning
AVM panoramic intelligent monitoring
LDW lane departure warning
EAPM throttle misstep correct
MOD Moving object/pedestrian alert

Production Configuration

Model Setting		
Basic Specification	Max. Speed (km)	200
	Length*Width*Height (mm)	4681*1840*1730mm
	Wheelbase (mm)	2706
	Body Structure	5 Seats, 5 Doors
	Vehicle Weight (kg)	1615
	Tire Specification	235/65 R17
Power System	Driving Mode	Front-engine Front-wheel Drive Layout
	Engine Brand	BHE15-EFZ
	Fuel Type	Gasoline

	General Oil Consumption (NEDC)	5.8
	Tank Capacity (L)	55
	Displacement (L)	1.5
	Valve Mechanism	DOHC
	Air Intake Type	Turbocharger
	Max. Horsepower (ps)	204
	Max. Torque	300
Chassis System	Gearbox Type	DCT
	Number Of Gears	8
	Front Suspension	Macpherson Independent Suspension
	Rear Suspension	Multi link independent suspension
	Brake System	Electric
Convenience	Radar	Front & Rear
	Seat Material	Imitation Leather
	Light Type	LED
	Driving Assistance Video	360°
	Size of The Touchscreen	12.3 Inch

Production Color Show

HOT SELLING COLORS SHOW



○ WHITE



● BLACK



● GRAY



● BLUE



● ORANGE



● RED



19158810053



mango@ruichengauto.com



electriccars-ev.com

Hall 5, No. 1, Yinhe Road, Damian Street Chengdu City, Sichuan Province, China